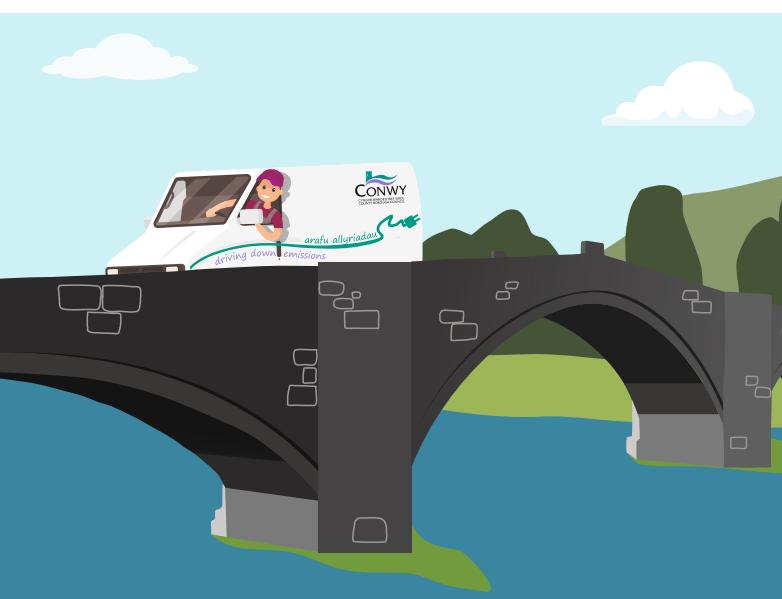




Conwy County Borough Council Carbon Management Strategy 2019 - 2024





Foreword: Councillor Don Milne, Cabinet Member for Environment, Roads & Facilities

Climate change, with extreme weather events, is impacting across our whole environment. Coastal communities like ours are particularly affected, as well as agriculture with reduced food yields. In the long term this is also leading to species extinction.

Climate change is closely linked to the consumption of energy from the burning of fossil fuels. Reducing carbon emissions involves minimising energy use, in both commercial and domestic properties and transport. We also need to reduce the consumption of scarce natural resources by limiting waste production.

Government policies to reduce these carbon emissions create financial pressures in the form of taxes on carbon consumption and waste collection. This strategy is designed to minimise the effects of government regulations and thus reduce the financial pressures on the authority.

Through the consequential effects of climate change the public is becoming increasingly aware that positive and substantial measures need to be taken to mitigate the effects of human activity on our planet. This Carbon Management Strategy represents the Council's firm commitment in tackling climate change at a local level.



What is Carbon Management?

Carbon emissions are produced from a number of activities undertaken by the council: use of fuel in vehicles; using energy to heat and light buildings and street lights; business travel and employee commuting; the production and disposal of waste to landfill.

Carbon management is about managing these emissions to reduce the negative impact on the natural environment, ensuring it is protected for future generations and can also help to reduce costs.

Why have a Carbon Management Strategy?

The UK government set targets to reduce carbon emissions by 37% by 2020 and 80% by 2050 against emission levels from 1990. Furthermore, The Welsh Government have set targets to reduce carbon emissions in Wales by 3% each year and achieve at least a 40% reduction by 2020 compared to 1990, with aspirations for a zero carbon public sector in Wales by 2050.

At the time of writing this strategy, Conwy Council has a legal duty to report its carbon emissions annually through the Carbon Reduction Commitment Energy Efficiency Scheme (CRC). As part of this scheme, the Council is required to pay for each tonne of carbon it produces from energy used in buildings and street lighting, which is a significant annual cost to the Council.

Under the Well-being of Future Generations (Wales) Act 2015, the Council has a legal duty to have in place longer term plans to improve the social, economic, environmental and cultural well-being of the County. This strategy contributes to delivering the 7 well-being goals of the Act: A globally responsible Wales; a prosperous Wales; a resilient Wales; a healthier Wales; a more equal Wales; a Wales of cohesive communities; a Wales of vibrant culture and thriving Welsh language.

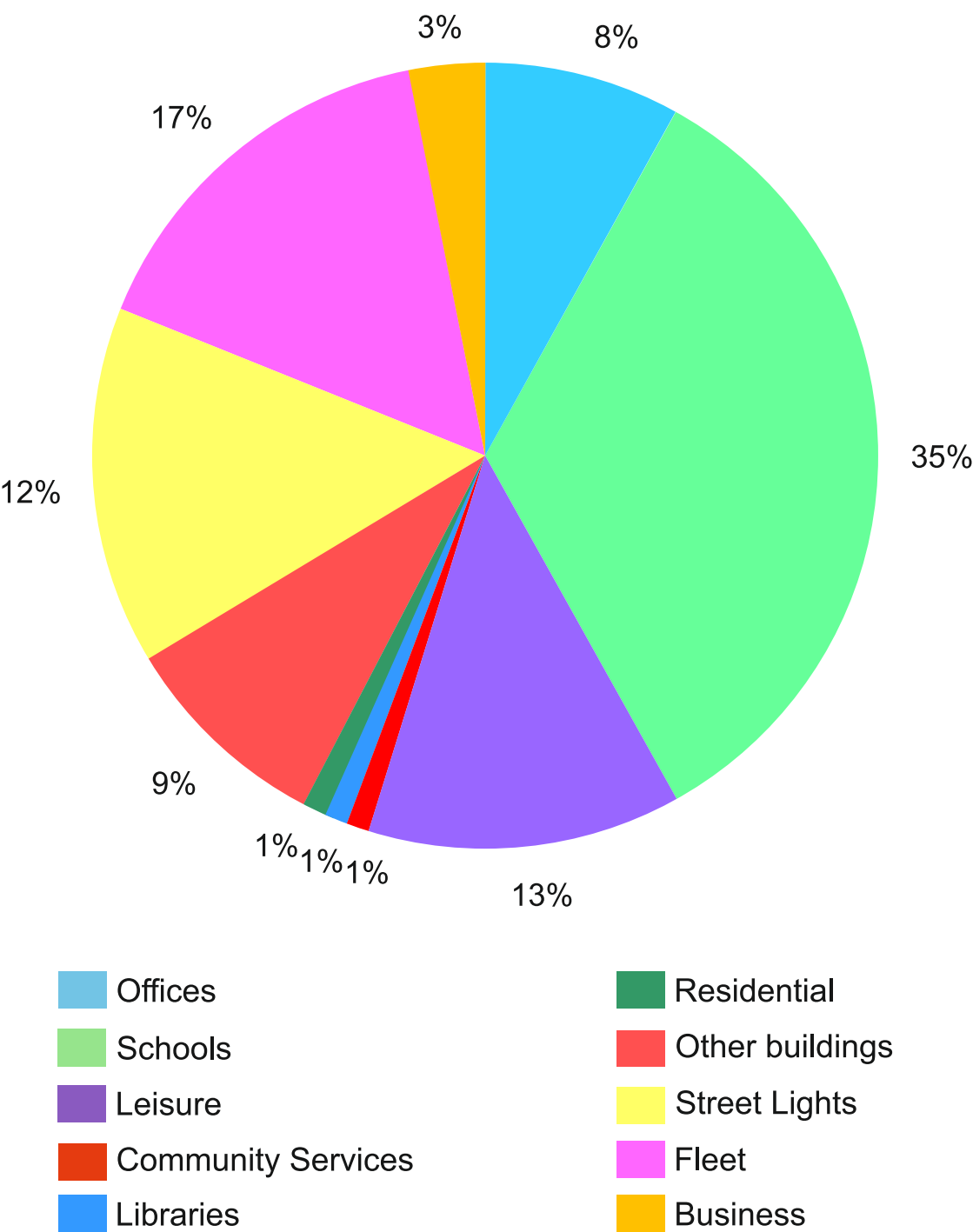
Delivering this 5 year Carbon Management Strategy will enable the Council to contribute to the national carbon reduction targets, comply with legislation, reduce associated costs and protect the natural environment. The strategy will also enable the Council to deliver its vision of becoming a carbon neutral authority and a leader in carbon management.



Conwy's Carbon Profile

Chart 1 below shows the contribution of carbon emissions from each element of the Council's activities in 2017/18, this information allows us to focus resources effectively to achieve the most significant reduction.

Chart 1: Carbon emissions from the Council's operations in 2017/18



Conwy's vision for carbon management

We will limit our negative impact on the environment and finite resources and work towards becoming a carbon neutral Authority.

How are we going to do it?

We will adopt the following principles in all that we do:

Principle 1 - We will monitor and reduce our energy and water consumption

Principle 2 - We will manage waste and resources sustainably

Principle 3 - We will operate a low carbon fleet and limit our business travel

Principle 4 - We will conduct our business from an energy efficient portfolio of buildings

Principle 5 - We will develop a low carbon culture within our organisation

Strategic Links

Wellbeing of Future Generations Act 2015

The Act places a duty on public bodies to deliver services in a sustainable way, working to improve the economic, social, environmental and cultural well-being of Wales by setting and publishing well-being objectives and taking reasonable steps to meet those objectives.

Conwy & Denbighshire Public Service Board Local Wellbeing Plan 2018-2023

This 5 year plan sets out the local objectives the Public Service Board will take to improve the economic, social, cultural and environmental well-being for the local area.

Corporate Plan 2017-2022

This 5 year plan sets out the Council's key priorities to support the needs of the citizens who live in, work in and visit the County Borough of Conwy, contributing to delivering the Conwy & Denbighshire Public Service Board Local Well-being Plan.

Local Development Plan

This is a plan for the development and use of land within the County Borough and will guide the location of new development until 2022.

Annual Service Plans

Each Council Service has a plan to detail the specific actions they will undertake during the year to develop the service and to achieve Corporate Plan priorities.

Principle 1 - We will monitor our energy and water consumption



As a large organisation, we use a lot of energy and water in our daily activities. This means we are having a negative impact on the natural environment by using finite natural resources and producing carbon emissions as a result.

It is vital that we record and monitor our use of these resources so that we can set targets and track our progress in reducing our reliance on them and seeking alternative, more sustainable sources for our energy use.

How will we do this?

- By recording and analysing our energy and water consumption data;
- By setting targets to reduce our energy consumption;
- By measuring how much of our energy comes from renewable sources;
- By reporting our carbon performance at least annually;
- By carrying out energy audits of our sites and identifying ways we can reduce our use of natural resources;
- By installing technology to improve the accuracy of our consumption data (e.g. SMART meters).

How will we measure success?

- % CCBC sites for which an actual meter reading is obtained v's estimated reading (gas, elec and water);
- % CCBC sites where technology is in place to record and monitor energy consumption data (e.g. SMART meters);
- Number of energy audits carried out.





Principle 2 - We will manage waste and resources sustainably

As a large organisation, we produce a significant amount of waste in our daily activities. As a local authority we have a legal responsibility to collect and dispose of household waste produced by the county's residents and to offer a collection service to businesses.

In order to safeguard the environment for current and future generations, we need to reduce the amount of waste we produce. We need to adopt more sustainable ways of dealing with our waste and minimise the amount that is sent to landfill, which not only damages the natural environment but is also very expensive.

How will we do this?

- By providing easy to use recycling facilities at our buildings and reducing the number of general waste bins to encourage waste minimisation and recycling;
- By providing weekly kerbside recycling collections to all households in Conwy, where residents can recycle paper, cans, glass, plastics, cardboard, food waste, nappies and batteries and fortnightly collections of textiles/shoes, small electrical items and garden waste;
- Offering recycling collections to local businesses, where they can recycle paper, cans, glass, plastics, cardboard, food waste and garden waste;
- By reducing the frequency of general non-recyclable waste collections to households in Conwy to encourage recycling;
- By identifying alternative treatment technologies to divert waste from landfill.

How will we measure success?

- % Municipal waste prepared for reuse, recycled or composted;
- Kgs residual waste generated per person;
- Average amount of residual household waste collected for disposal per household per day;
- % Commercial waste recycled;
- % Household waste collected at the kerbside that is reused, recycled or composted;
- % Change in CO₂ emissions from waste sent to landfill.





Principle 3 - We will operate a low carbon fleet and limit our business travel

With a large fleet of vehicles and delivering key frontline services right across Conwy County transport is a major contributor to the Council's carbon emissions.

We need to develop an infrastructure which reduces the need for travel but, where travel is necessary, provides low carbon transport solutions.

How will we do this?

- By making the routes that our vehicles use to deliver services, more efficient;
- By replacing our vehicles with low carbon alternatives;
- By monitoring how staff travel for business purposes;
- By developing an infrastructure which supports reduced and more sustainable work travel;
- By implementing a sustainable travel plan to help and encourage staff to adopt more sustainable methods of travel.

How will we measure success?

- % Change in miles travelled of CCBC fleet and grey fleet;
- % CCBC fleet which is low carbon (hybrid / electric);
- % Change in carbon emissions from the Council's fleet;
- % change in litres of fuel consumed by the Council's fleet;
- % Change in carbon emissions from staff business travel;
- % change in business miles travelled;
- % CCBC sites which have facilities that encourage reduced and more sustainable work travel.



Principle 4 - We will conduct our business from an energy efficient portfolio of buildings

The Council delivers services at many locations across the County and therefore occupies a large and diverse range of buildings, from offices and depots to theatres and leisure centres. Some of our buildings are old and inefficient and there are restrictions to the improvements we can make to some of them because they are protected by a listed status.



We use finite natural resources to heat and light our buildings so they are a major contributor to our carbon emissions and an important part of our environmental performance. It is vital that we do everything we can to make our buildings as energy efficient as possible, reduce our consumption of these finite resources and find innovative and more sustainable ways to operate our buildings without disrupting service delivery.

How will we do this?

- By reducing the number of buildings we occupy and making those that we keep more efficient;
- By making sure that energy efficiency is included in the design for any building improvements or new developments that we carry out;
- By carrying out improvements to our buildings to reduce our carbon emissions and making the best use of renewable technologies.

How will we measure success?

- % Change in energy consumption in Council buildings;
- Average Display Energy Certificate (DEC) rating of CCBC buildings over 1000m²;
- % Energy generated by CCBC that is from renewable sources.



Principle 5 - We will develop a low carbon culture within our organisation



People's waste and recycling habits, the way they use energy and how they drive are just some of the behaviours that have a significant impact on carbon emissions. It is therefore important that we help people understand that, by making small changes, they can make a positive contribution to reducing the Council's carbon emissions and safeguarding the environment for future generations.

We are committed to developing a low carbon culture by helping our staff understand the impact they have and to make those small changes in their daily lives.

How will we do this?

- By including environmental awareness as a topic in the induction sessions for new staff;
- By visiting local schools to promote waste minimisation, recycling and energy efficiency;
- By developing an online energy efficiency awareness training module for staff.

How will we measure success?

- Number of low carbon awareness sessions delivered;
- Number of visits to schools to promote recycling and waste minimisation;
- % CCBC staff who have successfully completed the energy efficiency online training module.

